



Byrd's Adventure Center

BYRDSADVENTURECENTER.COM
479-667-4066 OZARK, ARKANSAS
14 miles North of I-40 on Highway 23 then 6 miles East on Highway 215

Byrd's Adventure Center Area Map

WELCOME TO BYRD'S

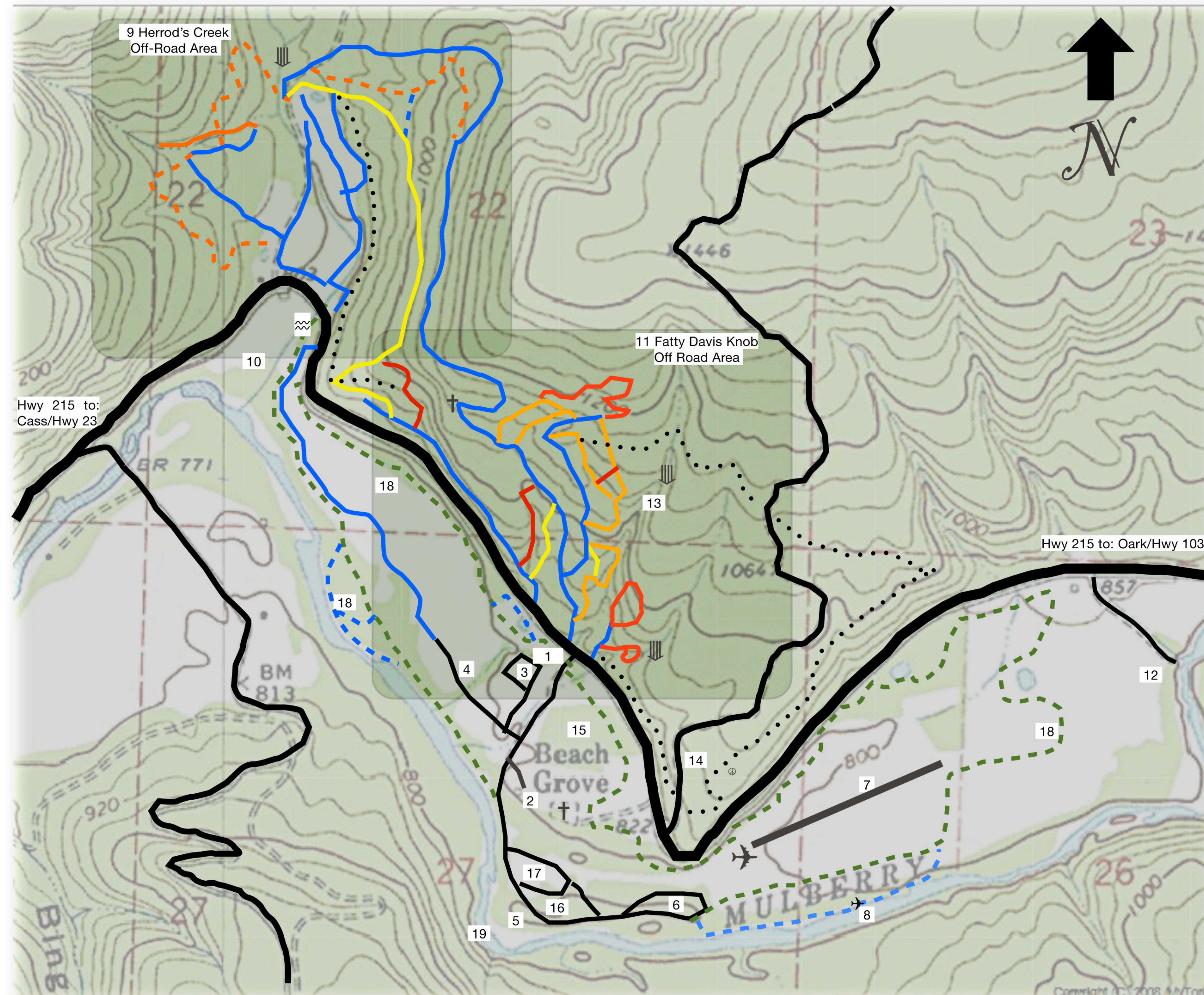
Here at Byrd's Adventure Center we have everything you need for outdoor fun. Ride over 30 miles of ATV, Jeep and Mountain Bike trails in our Private Off-road Park or use us as a starting point to the Million+ acre Ozark National Forest. Paddle the exciting Mulberry River in a Canoe, Raft or Sit-on-Top Kayak. We offer Guided and Non-Guided Trips, Boat Rentals, Shuttles and a Gear Shop. The Mulberry River and its tributaries sport a healthy Small Mouth Bass population and is a Fly Fishers' "Dream Stream." A Guided Oar-Frame Raft Trip down the river is a great way to enjoy the scenery and focus on fish. We host many events through the year including Races, Concerts, Parties, Fly-ins and Rallies. Our 2500-foot Airstrip has a taxiway into Pilot Camp, a private Riverside Campsite with tie-downs. Book a Zip-Line Tour, Rock Climbing or River Skills Class with one of our Nationally Certified Instructors. Our Campground features over 150 sites with 30 and 50-amp service, Primitive Camping, Cabin Rentals, Large Shower House (Remodeled in 2010), Covered Pavilions, Two large Stages, Playground, Amazing Swimming Hole, General Store and Hiking Trails. Ask about booking Byrd's for your Private event.

Byrd's Adventure Center

Come See if the Rumors are True ;)



ByrdsAdventureCenter.com



Map Key

- 1 Main Entrance
- 2 Office and General Store
- 3 Green Meadow Campground
- 4 Meadow Lane Campground
- 5 Riverfront Campground
- 6 Overflow Primitive Camping
- 7 International Hayfield Airstrip
- 8 Pilot Camp Primitive Camping
- 9 Herrod's Creek Off Road Area
- 10 Confluence Primitive Camping
- 11 Fatty Davis Knob Off Road Area
- 12 Whoop-N-Holler Day-Use Area
- 13 Canopy Canyon (Hiking only)
- 14 Beech Grove Road
- 15 Beech Grove Primitive Camping
- 16 Bathroom and Shower House
- 17 Stages and Pavilion
- 18 Perimeter Trail (4.5 miles)
- 19 Campground Swimming Hole
- Black Lines: Paved and dirt roads
- Blue Lines: Access Trails (4X4)
- Yellow Lines: Moderate Trails (4X4)
- Orange Lines: Difficult Trails (4X4)
- Red Lines: Extreme Trails (4X4)
- Dashed Green: Challenging ATV Trail
- Dashed Blue: ATV Trail Spur
- Dashed Orange: Difficult ATV Trail
- Dotted Line: Mountain Bike/Hiking



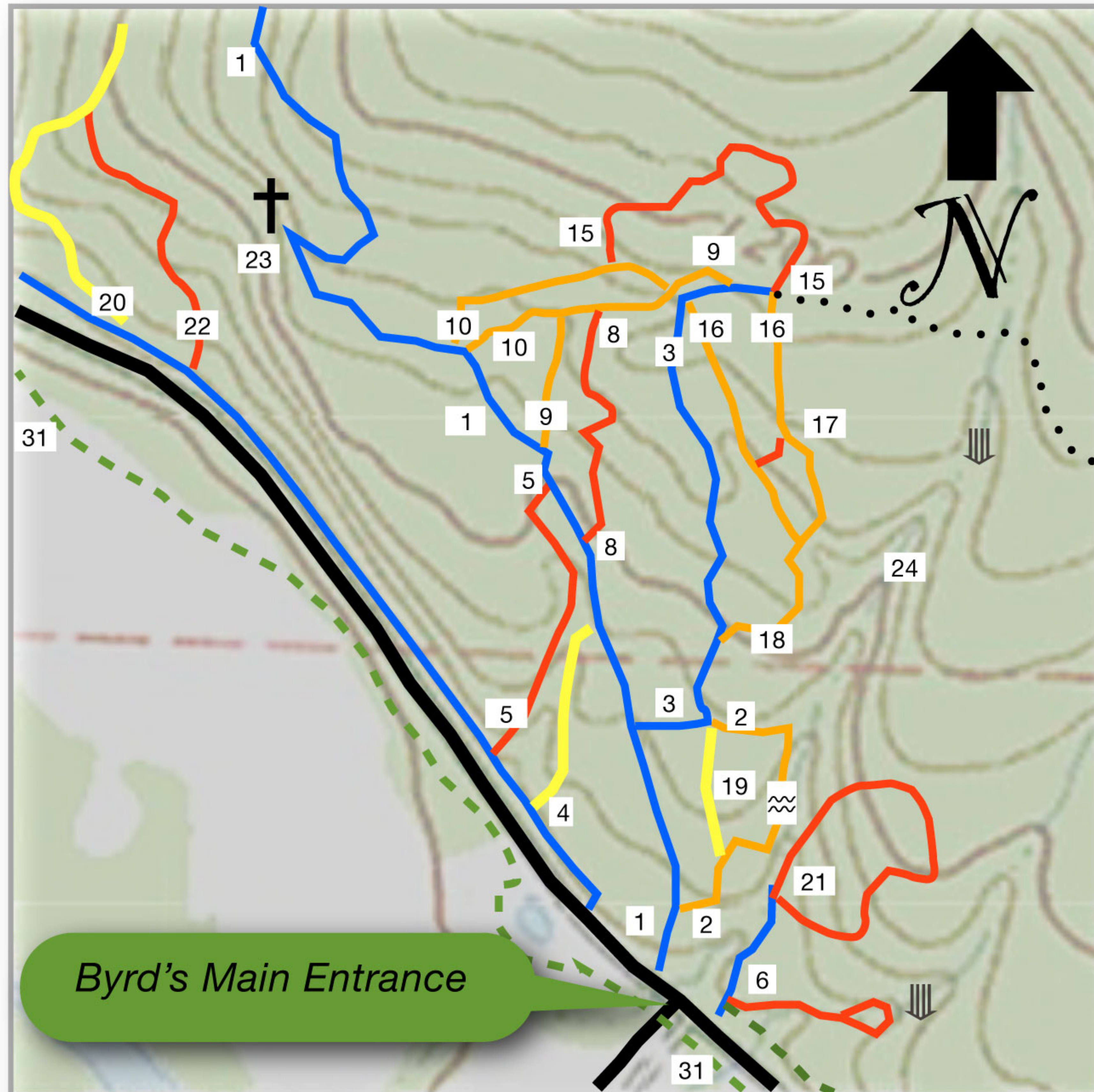
Byrd's Adventure Center

BYRDSADVENTURECENTER.COM

479-667-4066 OZARK, ARKANSAS

14 miles North of I-40 on Highway 23 then 6 miles East on Highway 215

Fatty Davis Knob Off Road Park



Map Key

Blue Trails: Access roads, can be done by most, well driven, stock 4X4 vehicles. 4WD may be needed.

Yellow Trails: For slightly modified 4X4 vehicles. High clearance, 4WD and good tires may be needed.

Orange Trails: For highly modified 4X4 vehicles. Winch, big tires, and at least 1 locking differential and spotters recommended.

Red Trails: For extremely modified 4X4 vehicles. Winch, 2 locking differentials, spotters, and big lug nuts recommended.

Black Trails: Dirt roads and Highways.

Dashed Trails: ATV/Bike ONLY.

All trails increase in difficulty at least one level when wet. River crossings exist, please do not cross flooded creeks. Risk of vehicle damage and personal injury/death exist. Travel in groups of 2 or more is recommended. Map is not to scale and not all trails are marked on the map or in the park. Travel at your own risk, be safe, have fun!

Dial 911 for emergencies

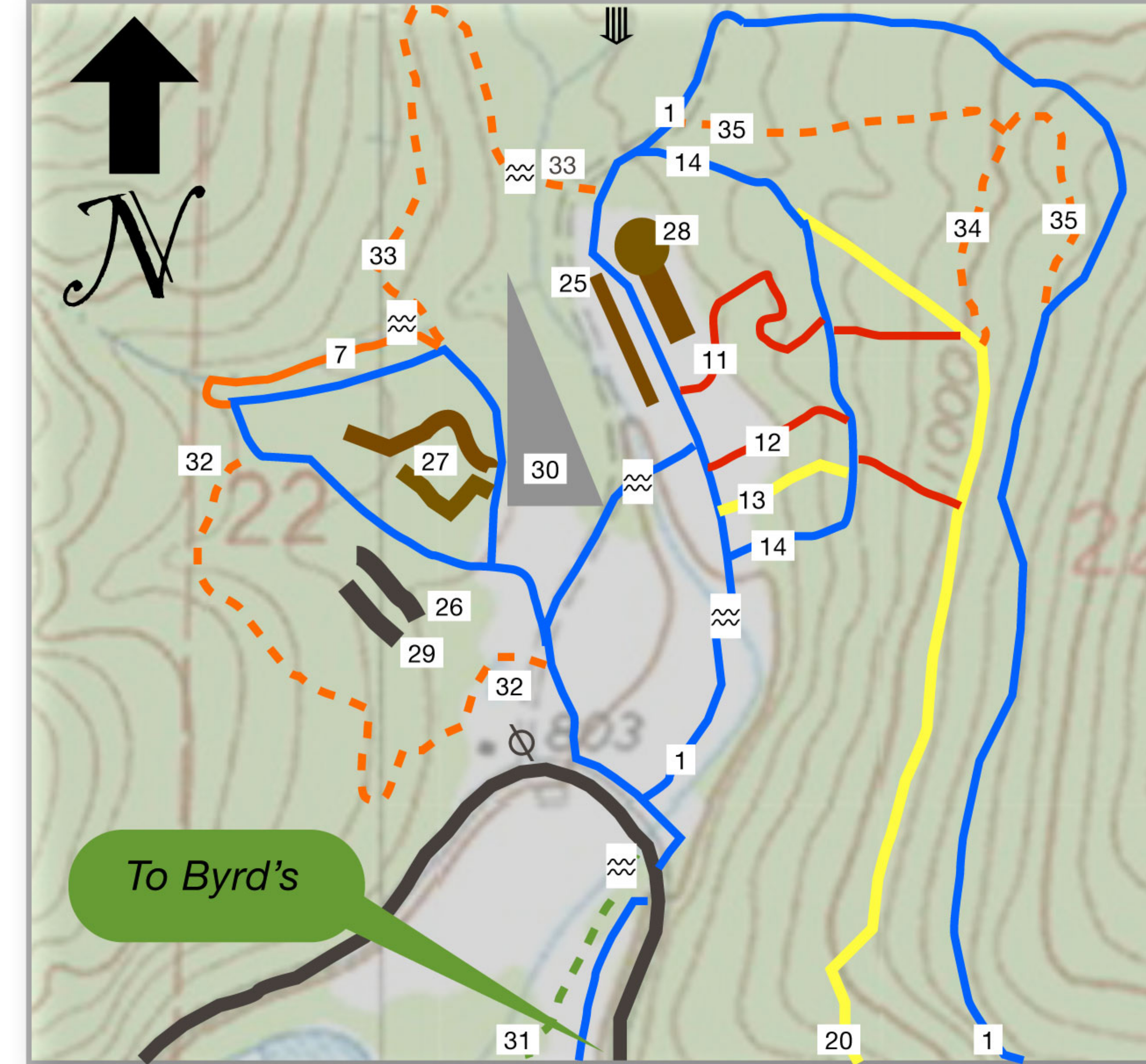
Phone located in the office

Trails and Points of Interest

- 1 Access Road (Blue)
- 2 Canopy Canyon Creek (Orange)
- 3 Access Road (Blue/Yellow)
- 4 Slight Hell (Yellow)
- 5 Pure Screaming Hell (Red)
- 6 Knuckle Buster (Red)
- 7 Rock Creek (Orange)
- 8 Down Pour (Red)
- 9 Between the Rocks (Orange)
- 10 Stroller Trail (Orange)
- 11 Waterfall Hill Climb (Red)
- 12 Ledges Hill Climb (Red)
- 13 EZ Hill Climb (Yellow)
- 14 Access Road (Blue)
- 15 Big Hill Trail (Red)
- 16 Valley Trail (Orange)
- 17 Big Easy (Red)
- 18 Over and Out (Orange)
- 19 The Grassy Knoll (Yellow)
- 20 Backside Trail (Yellow)
- 21 Widow Maker Hill (Red)
- 22 The Death Slabs (Red)
- 23 The Cross Overlook
- 24 Canopy Canyon (Hiking only)
- 25 Drag Strip
- 26 Frame Bender
- 27 The Trenches
- 28 The Mud Pit
- 29 The Little Rock Garden
- 30 The Rock Quarry(NO Wheeling)
- 31 The Perimeter Trail (Green)
- 32 The Lean-too Trail (Orange)
- 33 The Samurai Trail (Orange)
- 34 The Thorn Spur (Blue)
- 35 The 1000 Foot Trail (Green)
- 36 Mountain Bike Trail (Yellow)

- The Big Rock Garden is located near the campground across from the stage.
- Fatty Davis Knob entrances are across from the Main Entrance to Byrd's
- Herrod's Creek is located 1 mile East of the Main Entrance of Byrd's
- ≈ Indicates River Crossing

Herrod's Creek Off-Road Park



OFF ROAD PARK RULES

- 1 ALL participants MUST register at the office before entering park.
- 2 Stay on Existing Roads and Trails. Jeeps MUST stay off ATV/dirt bike trails. ATV's and dirt bikes must stay off Mountain bike trails. All wheels must stay off hiking trails.
- 3 Stay off the grass. Donuts, peel-outs, slides, etc. will get you removed from the property. No questions asked, no refunds given. A \$50 property damage deposit is required for all ORV's.
- 4 Do not speed. Blind corners, other users, playing children, cliffs and other dangers abound in the park. No trails are one way. Seat belts must be worn.
- 5 Quiet time is 10PM to 7AM. Park is closed and engines should be off after 10PM. NO night wheeling unless cleared by park staff.
- 6 Drunken behavior will NOT be tolerated. No exceptions, no questions asked, no refunds given.
- 7 No firearms, fireworks or other dangerous substances allowed on property. No hunting.
- 8 When winching use large, stable anchor point. Tree saver straps MUST be used. It's the LAW.
- 9 Do not litter. Dumpsters are provided in campground. Please pack out your trash. No one wants to see garbage in the great outdoors.
- 10 Trail selection is the responsibility of each driver and should be done according to driver skill and vehicle ability, Byrd's Adventure Center is not responsible for vehicle damage or personal injury incurred on trails or other obstacles. If your gonna be dumb, you gotta be tough.

Trail Markers

There are currently 2 types of trail markers used at Byrd's Adventure Center. In the Fatty Davis Knob Off Road Park you will see mostly colored wood arrows with the trail number. The color indicates difficulty and the number indicates trail name.



A new system is being put in place and should be complete by 2011. Our new markers are 2X6 inch colored metal strips with the color indicating trail difficulty and leaning in the direction of the next marker. These markers will be spaced closer together to better identify trails and put up on both sides of trees or poles so you can see them while traveling both directions. Markers put up in pairs will indicate trail junctions, obstacles and difficulty changes. Round disc with arrows will also indicate turns. The old marking system will remain with numbers to indicate trail names. A new color (Green) will be added to indicate ATV/Bike trails. Jeeps and 4X4 vehicles are NOT allowed on ATV/Bike trails. This system is subject to change and new trails will be added in the future. Check for new maps periodically.

